

Instruction



Preventive Maintenance Kit Major Plate Processors Polymer

IMPORTANT!

Please keep this instruction with other machine documentation as future reference when ordering spareparts. The spareparts concerning this kit are as listed in "KIT CONTENTS".

Part No 10062256 A

13-06-2011

Introduction

This instruction is valid for **Kit no 10062188**.

Products covered

The above mentioned preventive maintenance kit is for the following processors:

Plate Processors 68 Thermal serial nos 94866, 95094, 92261, 92368, 95426, 92510, 10061411, 92716, 92728, 92733, 92734, 92735, 92736, 92761, 92763, 92764, 93190, 93373, 93388, 93495, 93563.

Plate Processors 85 Thermal serial nos 95397, 95508, 94867, 91801, 92639, 95433, 92511, 10061407, 92717, 92729, 92737, 92738, 92739, 92740, 92762, 92765, 92852, 92968, 92988, 93191, 93294, 93374, 93389, 93545, 93564.



Verify that the serial number specified on the processor name plate located on the rear end of the tank on the left side is listed above.

Kit contents

Check contents of the kit and make sure that all parts are present and in good condition.

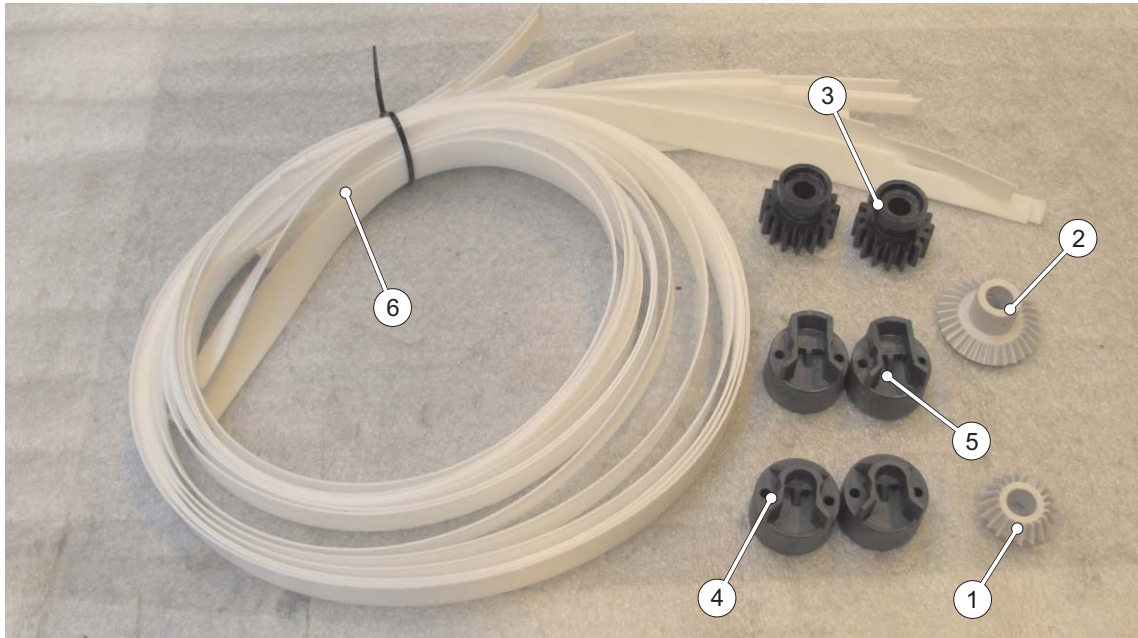
The kit consists of:

Item	Part No	Specification	Quantity
1	10002653	GEAR, CONICAL, Z20, M1.5, D12	1
2	63991	GEAR, CONICAL, Z30(20), M1.5	1
3	73240	GEAR, Z16, M2	2
4	10051730	BEARING, ROLLER, PREHEAT	2
5	10009651	BEARING, PREHEAT, COMPLETE	2
6	10005993	GUIDE, PTFE, PREHEAT	5
7	10062256	INSTRUCTION (THIS DOCUMENT)	1

Estimated time



Estimated time for the installation of the kit is 270 - 330 minutes.



Before Installation

Read this instruction sheet carefully and ensure it is fully understood before commencing the installation procedure. Seek clarification of anything that is not clear.



The exchange procedure must only be carried out by a well qualified service technician who is familiar with the equipment.



Install the Preventive Maintenance Kit Minor and Medium together with this kit.

Safety



Before any work is carried out, ensure that the processor is switched off, and disconnected from the electricity supply. It is recommended that the mains supply be locked off using a padlock or similar, and then a check made to ensure that the processor will not run.

Maintenance intervals



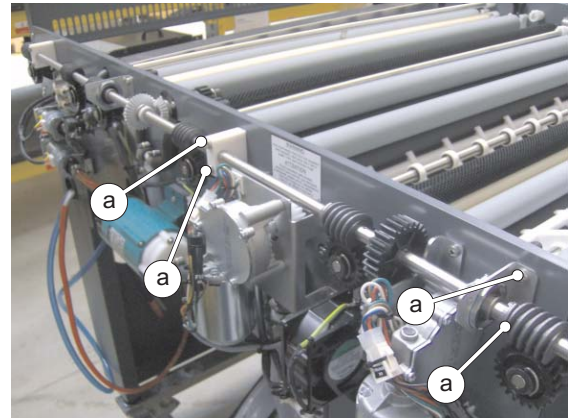
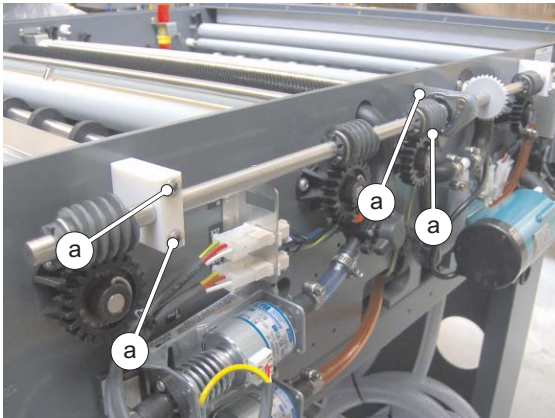
Carry out this maintenance procedure either after below specified processing hours, or after specified years after installation of the processor, whatever comes first.

Processing hours	or	Years after installation	Maintenance	Kit no	
				Raptor	Gecko 85
500	or	1	MINOR	10062189	10062206
1000	or	2	MEDIUM	10062190	10062207
1500	or	3	MINOR	10062189	10062206
2000	or	4	MAJOR	10062191	10062208
2500	or	5	MINOR	10062189	10062206
3000	or	6	MEDIUM	10062190	10062207
3500	or	7	MINOR	10062189	10062206
4000	or	8	MAJOR	10062191	10062208
4500	or	9	MINOR	10062189	10062206
5000	or	10	MEDIUM	10062190	10062207
5500	or	11	MINOR	10062189	10062206
6000	or	12	MAJOR	10062191	10062208

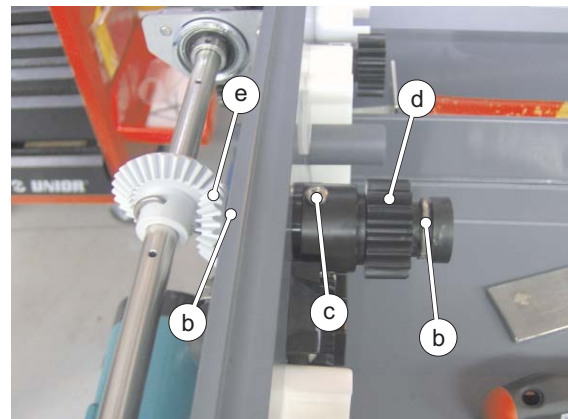
Procedure

Replacing gears

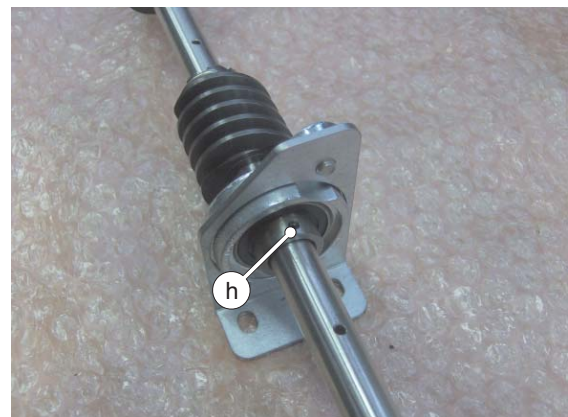
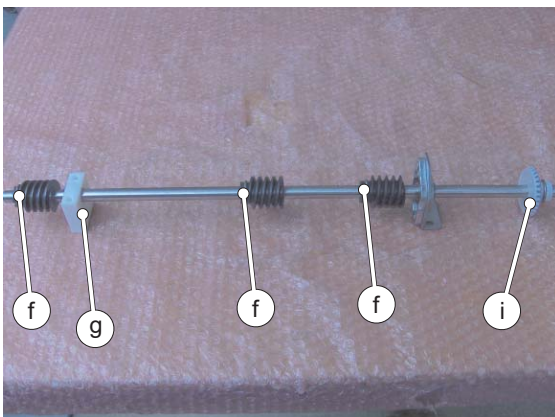
- Remove all rollers, brushes and brackets so there is easy access to all gears, remove the fenders, take off the drive shaft by dismounting the screws (a)



- Take off the clip (b) to remove the gears.
- Dismount the screw (c) to remove bearing seal.
- Pull out the shaft.
- Replace the gears with identical (d, e).
- Remount the shaft.



- Take off the clips (f) and remove the worm gears and the bearing (g).
- Loosen the set screw (h) and remove the bearing bracket.
- Replace the gear with identical (i).
- Remount the drive shaft onto the tank, place back rollers and brackets and remount fenders.

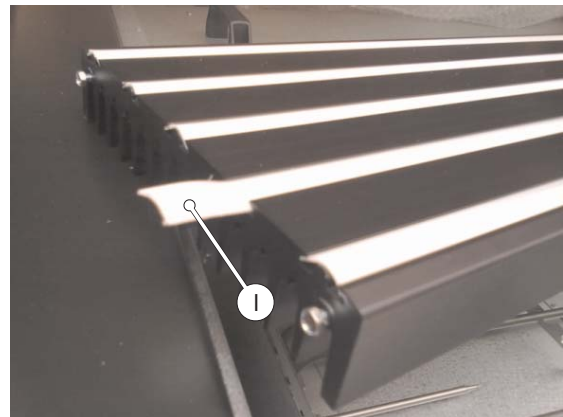
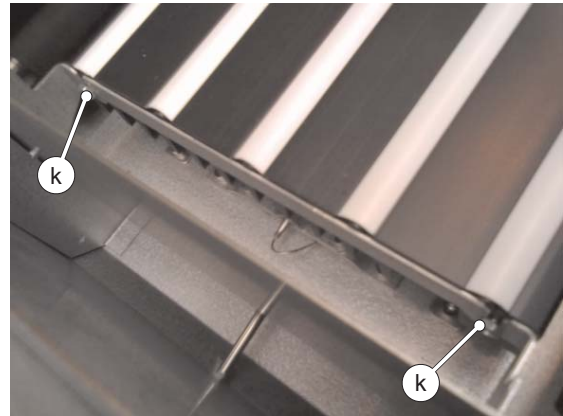


Preheat



Allow at least 3 hours for the preheat to cool down before carrying out the following procedure.

- Remove the top cover from the preheat section.
- Lift and take off the preheat lids (**j**).
- Loosen the four screws (**k**) and lift the preheat section.
- Pull out the guides and replace them with the new (**l**).



- Remove the preheat rollers.
- Unscrew the screws (**m**) to replace the preheat bearings.
- Remount the rollers, remount the preheat section and place back the preheat lid.

